

Upcoming Events

- ♦ **Lunch and Learn event:** *The History of Slavery in West Tennessee* with guest speaker Dr. David L. Acey, Sr., Saturday, **October 1st**; Noon at East Shelby Library.
- ♦ **NEIGHBORHOOD MEETING** Saturday, **October 8, 2016**, 3PM @ East Shelby Library.
- ♦ **FALL "Scary" MOVIE NIGHTS:** Saturday, **October 8th** and **29th** 6 PM on Espie Cove.
- ♦ **Lunch and Learn event:** *Freed Slaves in Memphis and Reconstruction* with guest speaker Dr. Susan Eva O'Donovan, Saturday, **October 15th**; Noon at East Shelby Library.
- ♦ **ACT Prep Workshop for Students:** *ACT Now and unmask the ACT.* Saturday, **November 5, 2016**, from noon to 2 pm @ East Shelby Library.

Check out the Library's website for fun, family events.

VOLUNTEERS ARE NEEDED FOR LUNCH AND LEARN EVENTS AND FALL MOVIE NIGHTS!

Rent a 110 inch outdoor screen to have your own fun movie nights for just \$25.00. Email richwoodhills.neighborhood@comcast.net for details.

In the case of inclement weather, please check the website for event updates. www.richwoodhillsneighborhood.org

Neighborhood News

Neighborhood Cleanup! Come out Saturday, October 1st at 7:30 am to help clean up the neighborhood. Support the fight to keep our community valuable and looking great!

Help pickup trash and trim hedges and trees.

We will meet at the intersection of Long Creek and Shelby Dr.

* In case of rain the event will be postponed to October 8th.

We Have Not Because We Ask Not....

The **FUTURE** of a neighborhood depends on the dedication of its residents and actions of its neighborhood associations.

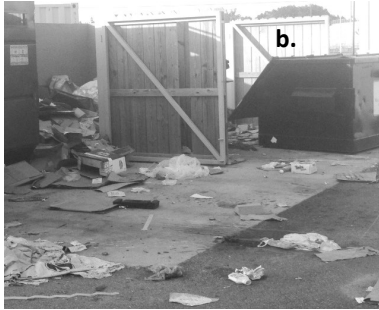
Nearby homes, stores, facilities, and services play a huge role in determining the quality of life and property value in a neighborhood. **Signs That Your Neighborhood's Value Is in Decline include:** More trash and debris; Absentee-owned properties; Inactive neighborhood parks; Neglect from public officials; and Declining school quality.

Neighborhoods that are slowly declining lack both **GOVERNMENT** and **COMMUNITY** support. Government support and funding are **COMPLAINT DRIVEN** and officials devote resources to neighborhoods that are the **MOST ACTIVE**.

We need vibrant parks, safe streets, and the best technology in schools. But how can a community be heard, if it does not speak?

Join the FIGHT for a better FUTURE. Be active in your neighborhood

Stop the Decline



a., b. Dollar Tree stores on East Shelby Dr;
c. Trash on Long Creek; d. Vacant house;
e. Trash bins stored in front of home.

Speak Up Now!

Report Neighborhood Concerns

Please report **ALL** suspicious activity to the Sheriff's office.
Report code violations to the contacts below.

van.turner@shelbycountyttn.gov County Commissioner
lee.hinson@shelbycountyttn.gov Conservation Board (Gerland Creek and Lowrance Park)
Darren.Sanders@shelbycountyttn.gov Public Works
action@shelbycountyttn.gov Mayor's Action Center (call 901- 222-2300)
Shelby County Sheriff 901-379-7625

Neighborhood Movie **FRIGHT** Nights

Saturday, October 8th and 29th
Starting at 6:00 pm

Bring your chairs and blankets

* In case of rain, event will be postponed.



WALK THE NEIGHBORHOOD. Come out for some exercise. Starting October 8, 2016, we will meet **each Saturday** at the corner of Shelby and Long Creek at 7:30AM for a 5K walk through the neighborhood. Put on your best walking shoes and bring water!



Fall is the perfect time to take care of the little things
that can make a big difference.

- ⇒ Test smoke detectors, inspect (or install) fire extinguishers, and have a fire escape plan.
- ⇒ Inspect and clean gutters.
- ⇒ Trim and Fertilize yard (trees, shrubs and grass).



Support the Richwood Hills Neighborhood Association

Go **ONLINE** to make a donation or pay association dues at
www.richwoodhillsneighborhood.org. Click on
the **DONATION** button to make an annual donation
of \$53.00!